

13. Kurian, N. P., Waves and littoral process at Calicut. In *Ocean Waves and Beach Processes* (eds Baba, M. and Kurian, N. P.), CESS, Trivandrum, 1988, pp. 91–110.
14. Harish, C. M., Waves and related nearshore processes in a complex bay beach at Tellicherry. In *Ocean Waves and Beach Processes* (eds Baba, M. and Kurian, N. P.), CESS, Trivandrum, 1988, pp. 183–204.
15. Kurian, N. P., Shahul Hameed, T. S. and Baba, M., A study of monsoonal beach processes around Alleppey, Kerala. *Proc. Indian Acad. Sci. (Earth Planet. Sci.)*, 1985, **94**, 323–332.
16. Black, K. P., Kurian, N. P. and Baba, M., Open coast monsoonal beach dynamics. *J. Coast. Res.*, 2008, **24**, 1–12.
17. Rajith, K., Kurian, N. P., Thomas, K. V., Prakash, T. N. and Shahul Hameed, T. S., Erosion of a placer mining beach of SW Indian coast. *Mar. Geodesy*, 2008, **31**, 128–142.
18. Folk, R. L., *Petrology of Sedimentary Rocks*, Austin, Hemphills University, Texas, 1984, p. 170.
19. Battjes, J. A. and Janssen, J. P. F. M., Energy loss and set-up due to breaking of random waves. Proceedings of the 15th International Conference on Coastal Engineering, 1978, pp. 569–587.

ACKNOWLEDGEMENTS. We thank the Director, Centre for Earth Science Studies, Thiruvananthapuram for providing facilities. We also thank Shri Tiju I. Varghese for the help and support extended during sedimentological analysis. We also thank Smt L. Sheela Nair, Shri S. S. Praveen and Shri S. Arjun for their help during the preparation of the manuscript.

Received 11 May 2009; revised accepted 27 January 2010

Geopathic stress: a study to understand its nature using Light Interference Technique

N. P. Dharmadhikari¹, D. C. Meshram²,
S. D. Kulkarni³, S. M. Hambarde⁴, A. P. Rao⁴,
S. S. Pimplikar⁵, A. G. Kharat⁶ and P. T. Patil⁷

¹Department of Applied Physics, JSPM'S Jayawantrao Sawant College of Engineering, Hadapsar, Pune 411 028, India

²Department of Geology, University of Pune, Pune 411 007, India

³Department of Environmental Science, New Arts Commerce and Science College, Ahmednagar 414 001, India

⁴Department of Electronic and Telecommunication, JSPM'S Jayawantrao Sawant College of Engineering, Hadapsar, Pune 411 028, India

⁵Department of Civil Engineering, Maharashtra Institute of Technology, Kothrud, Pune 411 038, India

⁶Department of Civil Engineering, Sinhgad Academy of Engineering, Kondhwa (Bk.), Pune 411 048, India

⁷Department of Civil Engineering, PVPIT, Budhgoan, Sangli 416 304, India

The energy emitted by the earth at a specific location on the surface, which affects the normal human body function, is termed as geopathic stress (GS). Studies of the exact nature and characteristic of GS are sparse.

*For correspondence. (e-mail: sejalrohit2007@gmail.com)

Some studies indicate that GS may be of electromagnetic nature or subtle energy (Jane Thurnell-Read). The archaic method to identify GS is by dowsing. This communication attempts to make use of 'Light Interference Technique' to study the nature of GS in and around the pre-detected GS location on the Mumbai-Pune expressway and some residential areas of Pune. The results indicate that this stress may be due to concentrated low energy at the respective locations.

Keywords: Dowsing, geopathic stress, Light Interference Technique.

DURING the archaic time, a site for dwelling or work place was located after several tests like 'Bhumi Pariksha' (examining the location for typical characteristic). This was done to avoid specific locations where people do not sleep well, get sick more easily or where the efficiency of people is lowered¹⁻⁴. Energies from earth at specific locations, that have an ability to change the normal functions of the human system, are termed as geopathic stress (GS)⁵. There are several sources that generate GS⁶. The archaic method for selecting a site for dwelling considered the presence of bushes, colour of land, presence of water bodies and the development of trees. GS is directly linked with groundwater. It is a common practice to locate groundwater with the help of dowsing⁷. The major cause of natural origin of GS is associated with the subterranean groundwater flows at various depths, with geological faults, fissures, joints and lineaments⁸⁻¹⁰.

Extensive studies have been made to understand the nature and effect of GS on the built environment¹¹⁻²⁰. Literature survey reveals that GS may be a form of imbalanced electromagnetic energy spectrum or subtle energy²¹⁻²³. The effect of GS is obvious on humans, animals and even on plants. However, a systematic scientific device is required to study the nature of GS. Therefore, an attempt is made to study the interaction of laser light beam with GS using Light Interference Technique (LIT).

In ancient times, detection of GS was traditionally done by using dowsing or biolocation and kinesiology²⁴. Though these techniques have been successful based on their statistical success ratios, and are also simple, fast and inexpensive; there is a continued skepticism about their acceptance by the scientific community. Dowsing is a crude technique and does not give any numerical value or a reading. GS locations identified were confirmed for the existence of groundwater using resistivity method and seismic refraction method²⁵. All these methods are lengthy, time consuming and complicated as compared to dowsing. An attempt is made here to design simple, low cost and easy handling device to study the nature of GS.

Light has electromagnetic nature and discrete bundle of energy. These packets are called quanta and particle of light is photon²⁶. According to Jane Thurnell-Read, GS may be of electromagnetic nature or subtle energy. The ray diagram of the set-up of LIT is shown in Figure 1,

which has a gap between laser light source and detector. In case GS is present in the gap, then interaction occurs between photons of laser light and GS which changes the current. If no GS is in the gap of source and detector, then no interaction occurs keeping the current constant.

The studies were carried out in and around Pune. The lithology of the area is basalt, which belongs to the Deccan Trap. The basaltic rocks are more homogeneous with respective texture and mineralogy²⁷. The location of GS is identified by a dowser using copper L-rod on expressway and some parts of Pune preferably near existing well having perennial water (Figure 2). A rectangular wooden box having a setup of coherent laser light produced by semiconductor diode and selenium photodiode as detector at other end, as shown in Figure 1, is placed on GS location. It is observed that metal and polymer attenuate GS²⁸ hence wooden box was selected. Further, the box was painted black from inside and outside to avoid any other light to fall on laser light beam and detector. The selenium detector is connected to a micro current meter. This set-up is termed as LIT.

The procedure followed was to keep the LIT set-up on the GS location and outside GS location for one hour and

record variation in current at an interval of 5 min (Figure 3). Observations were taken for one month. In order to confirm that emission of GS is from the ground towards the sky in vertical direction, it was decided to rotate the LIT set-up in 360° (Figure 4). Observations were taken at 10° interval. The same experiment was carried out on non-GS location.

It was observed that at non-GS location the current remains constant (Figure 3). For the GS location the current sharply decreases and after 8 min, increases and further

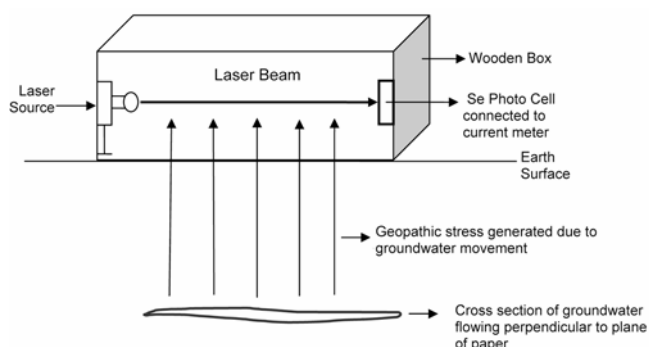


Figure 1. Experimental set-up of Light Interference Technique.



Figure 2. Experimental set-up at one geopathic stress zone location.

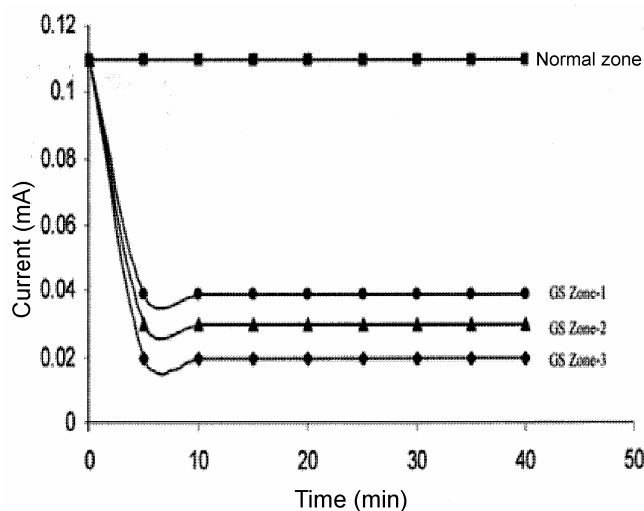


Figure 3. Variation in current with time for various zones.

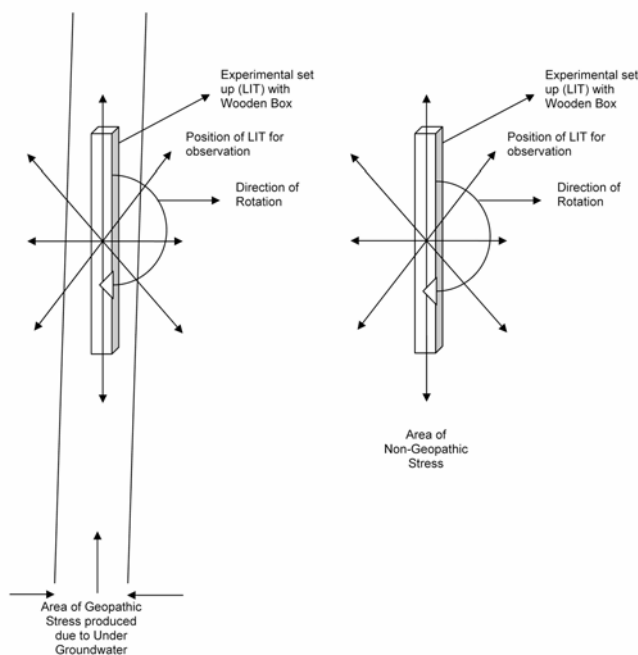


Figure 4. Rotation of experimental set-up with wooden box from 0° to 360° of an interval of 10° in geopathic stress zone and non-geopathic stress zone.

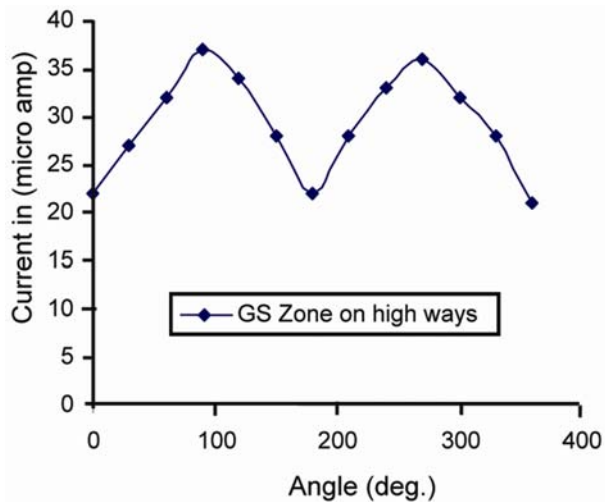


Figure 5. Variation in current with respect to angle.

remains constant. When LIT set-up is rotated by 360° , the current appears to be sinusoidal (Figure 5).

From the observation it is clear that on a GS location the current sharply decreases and then remains constant. This may be due to less photons reaching the detector, which indicates that there is some interaction due to GS. A small dip is observed in the graph (Figure 3) because of transition. When LIT is rotated in 360° on GS location the current shows sinusoidal characteristics which may be attributed to the vertical emission of GS. It also indicates that GS is not distributed in all possible directions. It may be said that it is a form of subtle energy which affects the photon and needs further investigation.

The present study that GS location has some sort of subtle energy which can be quantified with the help of simple setup such as LIT. However, the exact nature needs to be studied. The LIT set-up may be used to identify GS locations which are primarily on groundwater, by a simple technique which is less time consuming.

1. Bergsmann, O., *Risikofaktor Standort, Consequence of Human Association with Pathogenic Sites*, Vienna, Facultas University Press, 1990.
2. Freshwater, D., Geopathic stress. *Complement Ther. Nurs. Midwifery*, 1997, **3**, 160–162.
3. Bergsmann, O. and Bergsmann, R., *Chronische Belastungen Vienna*, Facultas University Press, 1998.
4. Hacker, G. W., *Earth Fields and their Influences on Living Organisms*, International Seminars at Druskininkai, 12–15 June 2008, 08–26.
5. Kharat, A. G., Empirical and theoretical investigation on built environment, Ph D thesis, University of Pune, 2000.
6. Christopher, S. and Cantab, M. A., Proceedings of the First International Congress on Geopathic Stress, Cyprus, 1997.
7. Betz, H. D., Unconventional water detection: field test of the dowsing technique in dry zones, Parts I & II. *J. Sci. Expl.*, 1995, **9**, 1995.
8. Telford, W. M. and Geldart, L. P., *Applied Geophysics*, Cambridge University Press, NY, 1976, p. 859.

9. Morrison, F., Gasperikova, E. and Washbourne, J., *The Berkeley Course in Applied Geophysics*, 2004; <http://appliedgeophysics.berkeley.edu:7057/>
10. Powar, K. B. and Patil, D. N., Structural evolution of the Deccan Volcanic Province: a study based on LANDSAT-1 imageries. Proceedings of the 3rd Indian Geological Congress, Poona, India, 1980, pp. 235–253.
11. Alexander, P. D., Geopathic zones and oncological diseases. Druskininkai, 2008, 42–44.
12. Mastson, T. M. and Smith, S. S., *Traffic Engineering*, McGraw-Hill, 1955, pp. 20–24.
13. Baig, M. Y., Water-divining and geophysical exploration for ground. Indian 4th Annual Convention and Seminar on Hydrology, Hissar, Association of Hydrologists, India, 1985, III4, III5.
14. Bachler, K., *Earth Radiation*, Word Asters Ltd, 1989.
15. Brennan, B. A., *Hands of Light*, Bantan, 1989.
16. Advisory Group on Non-ionizing Radiation, Electromagnetic Fields and the Risk of Cancer, Documents of the National Radiological Protection Board, Oxon, Chiton, 1992, vol. 3, pp. 1–138.
17. Von Pohl, G. F., *Earth Currents: Causative Factors of Cancer and Other Diseases*, Frech-Verlag, Stuttgart, 1993.
18. Croome, D. J., The effect of geopathic stress on building occupants. In Proceeding of World Renewable Energy Congress, Part II (ed. Sayigh), University of Reading, Pergamon, 11–16 September 1994, pp. 993–996.
19. Sayed, T., Using accident correctability to identify accident-prone location. *J. Transport. Eng. Earth*, ASCE123, 1997, **2**, 107–113.
20. John, A., *The Perils of Progress*, Zen Books Ltd, 1999.
21. Slik, A. and Crown, D., *Ancient Energies of the Earth*, Thorsons, 1999, p. 469.
22. Saunders, T., Health hazards and electromagnetic fields. *Complementary Ther. Nurs. Midwifery*, 2003, **9**, 191–197.
23. Gerhard, W. H., Biomedical evidence of influence of geopathic zones on the human body: scientifically traceable effects and ways of harmonization. *Forsch Komplementarmed Klass Naturheilkd Karger*, 2005, **12**, 315–327.
24. Jane Thurnell-Read, *Geopathic Stress and Subtle Energy*, Life-Work Potential, UK, 2006.
25. Pimplikar, S. S., Accidents caused by geopathic stress—case study and research finding. CIDC-International Conference on Construction – INCITE/ITCSED, 2006, pp. 139–157.
26. Chester, M., *Primer of Quantum Physics*, Dove Publication, 1992.
27. Vaidyanadhan, R. and Ramakrishna, M., *Geology of India*, Geological Society of India, Bangalore, 2008, vol. 2, p. 994.
28. Pimplikar, S. S. and Kharat, A. G., Role of Geosynthetics and Smart Materials in the Identification and Control of Geopathic Stress, International Conference on Vastu Panorama, Indore, India, 2004, pp. 116–117.

ACKNOWLEDGEMENT. N.P.D. thanks the BCUD, University of Pune for financial assistance.

Received 6 March 2009; revised accepted 27 January 2010